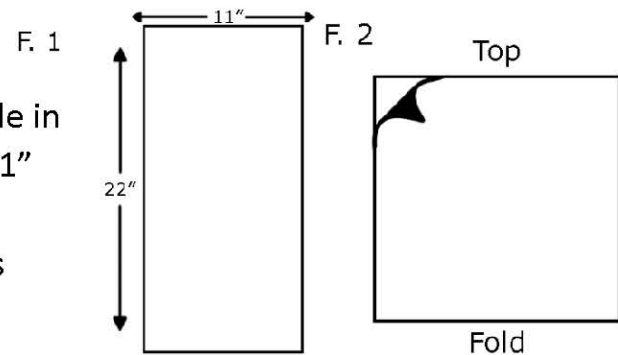


Operation Shoebox Ditty Bag Instructions

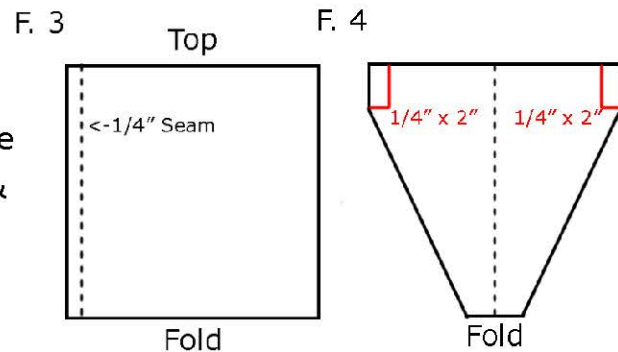
Fabrics: Cotton, cotton-polyester blends, light-weight decorator fabrics work best.
(No upholstery fabric or denims – TOO HEAVY)

USE 1/4" SEAMS, BACKTACK AT THE BEGINNING & END OF EACH SEAM.

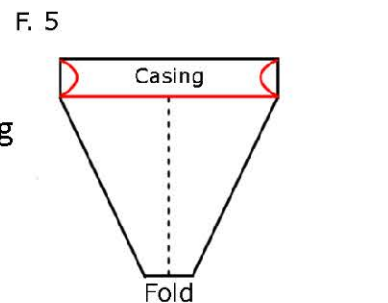
Cut fabric into a 11" x 22" rectangle. Fold the 22" side in half, right sides together. Bag should now be 11" x 11" with the fold on the bottom. (Figure 1 & 2) For directional fabric, the fold is on a side & the casing is sewn first before the seams.



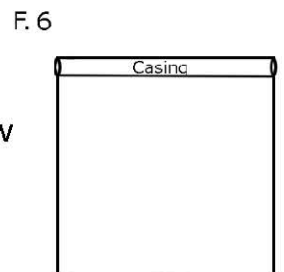
With the right sides together, Stitch down 1 side (Figure 3). Open the top of the bag & lay flat with the WRONG SIDE UP, & fold at the bottom. On the left & right sides of the top, fold in 1/4" & stitch down 2". (Figure 4)



Fold the top down 1" on the wrong side & sew across to form casing for the drawstring. Clip the 1/4" seam just below the casing on each side so the seam lays flat for sewing. (Figure 5)



With the right sides together, stitch the open side, starting just below the casing. (Figure 6) Turn the right side out.



String is a 4-ply yarn, single crochet chain, 30" long, using a G or H hook.

Any questions, call Betty Schneider: [\(352\) 350-7076](tel:3523507076) or email: geobet9@aol.com

THANK YOU FOR YOUR HELP IN COMPLETING OUR MISSION